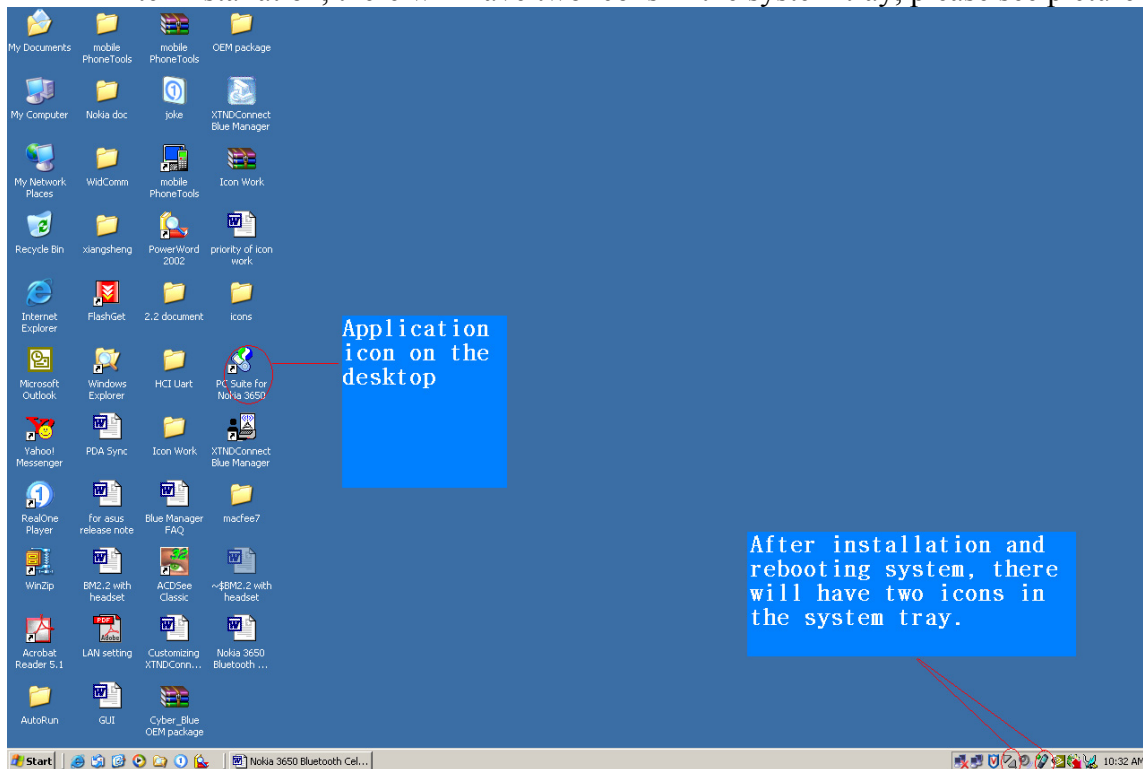
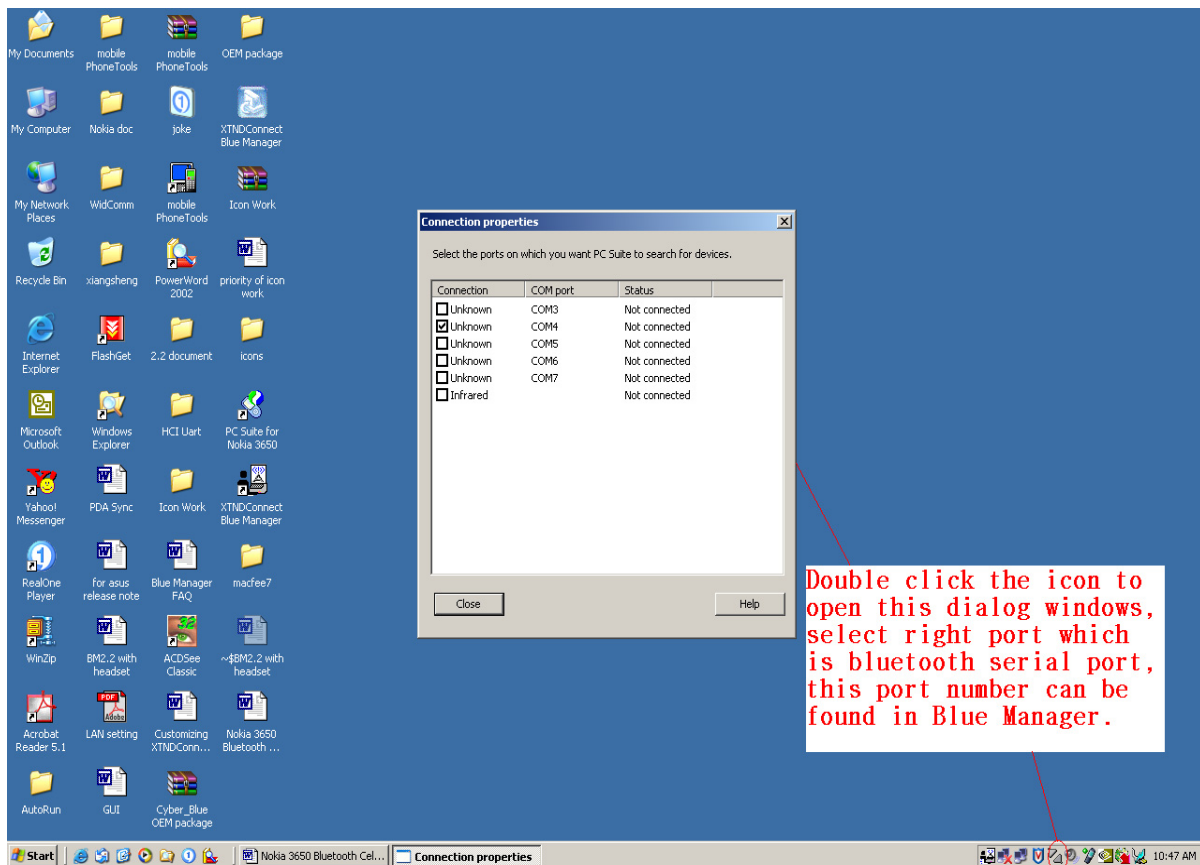


This topic is about how Blue Manager and Nokia 3650 Bluetooth enabled cell phone work together. Usually, end user can do DUN/GPRS, file transfer by reading the manual from Nokia, this topic is mainly focus on how to sync.

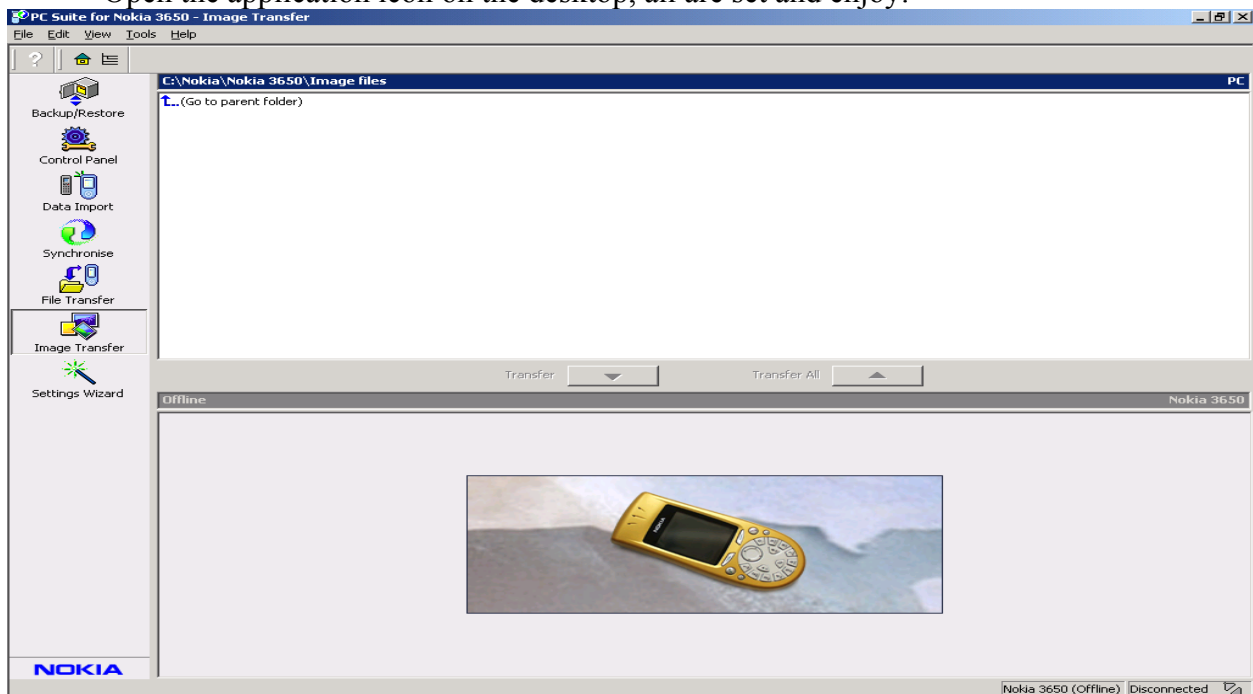
- First of all, please install 3650\_PCSuite.exe, this file either come with your cell phone package or can be downloaded from Nokia website;
- After installation, there will have two icons in the system tray, please see picture below:



- Install Blue Manager;
- After rebooting system, please run Blue Manager, make sure Nokia 3650 is in discoverable mode, then right click the icon of Nokia 3650, select “Trust Device” to pair PC/Laptop with this phone (only for first time, see manual of Nokia 3650, your PC/laptop will be set as authorized in Nokia 3650);
- Please check the bluetooth virtual serial COM port, Tools→Options→Bluetooth Ports, please remember the port number.
- Double click the left icon in the system tray to open one dialog window named ‘Connection Properties’ to select right port to connect to, see picture below:



- After selecting the right port, there will have a jump out Blue Manager Dialog, please select Nokia 3650, then close the connection properties dialog window;
- Open the application icon on the desktop, all are set and enjoy:



Trouble shooting:

- If double click the application icon on the desktop and was told to attach cell phone, that means the right port is occupied by other application or software, please open network connections, check the properties of bluetooth connections (Dial-up/GPRS), uncheck the port.